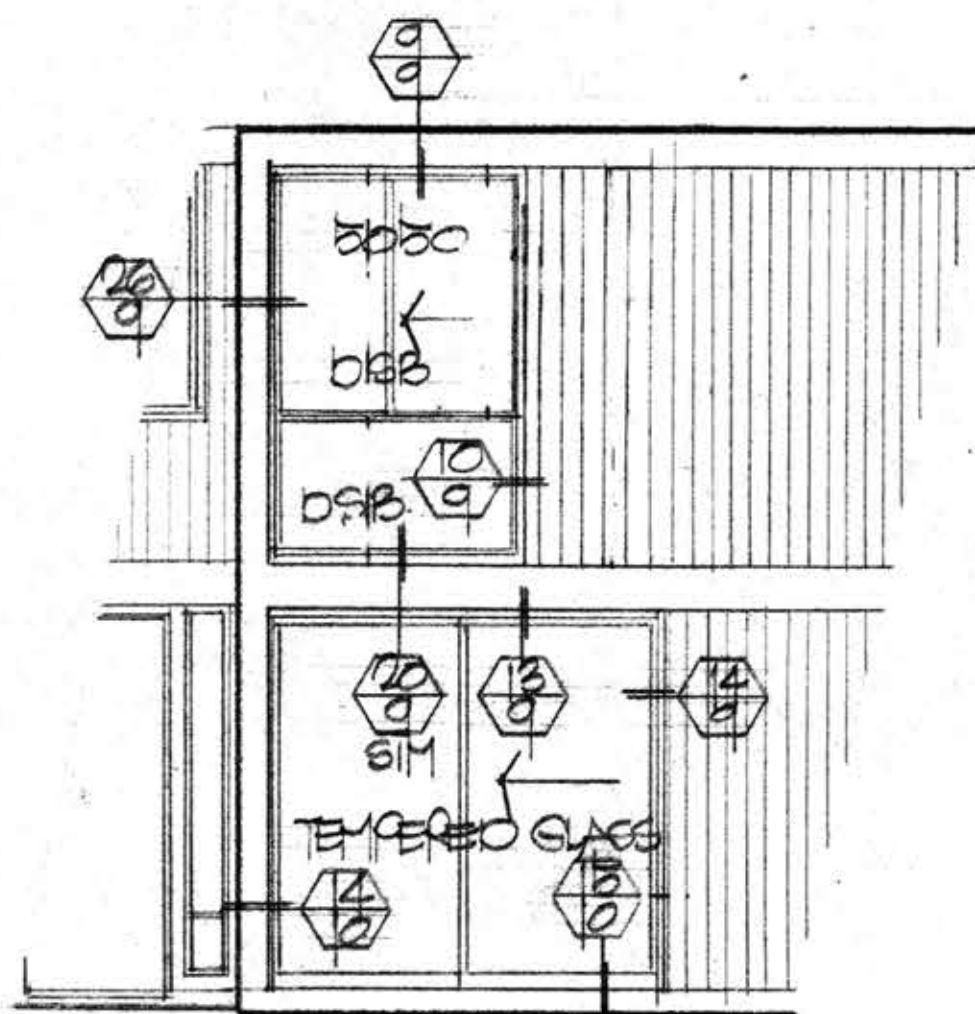
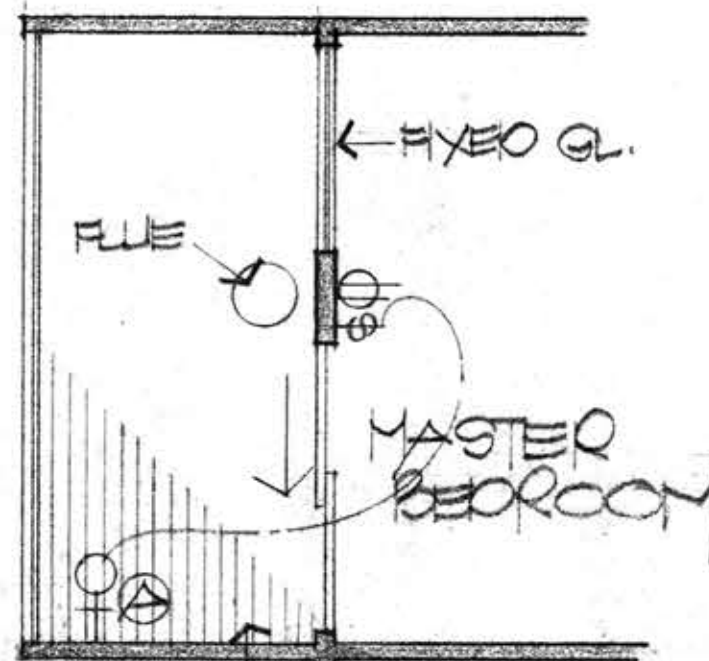


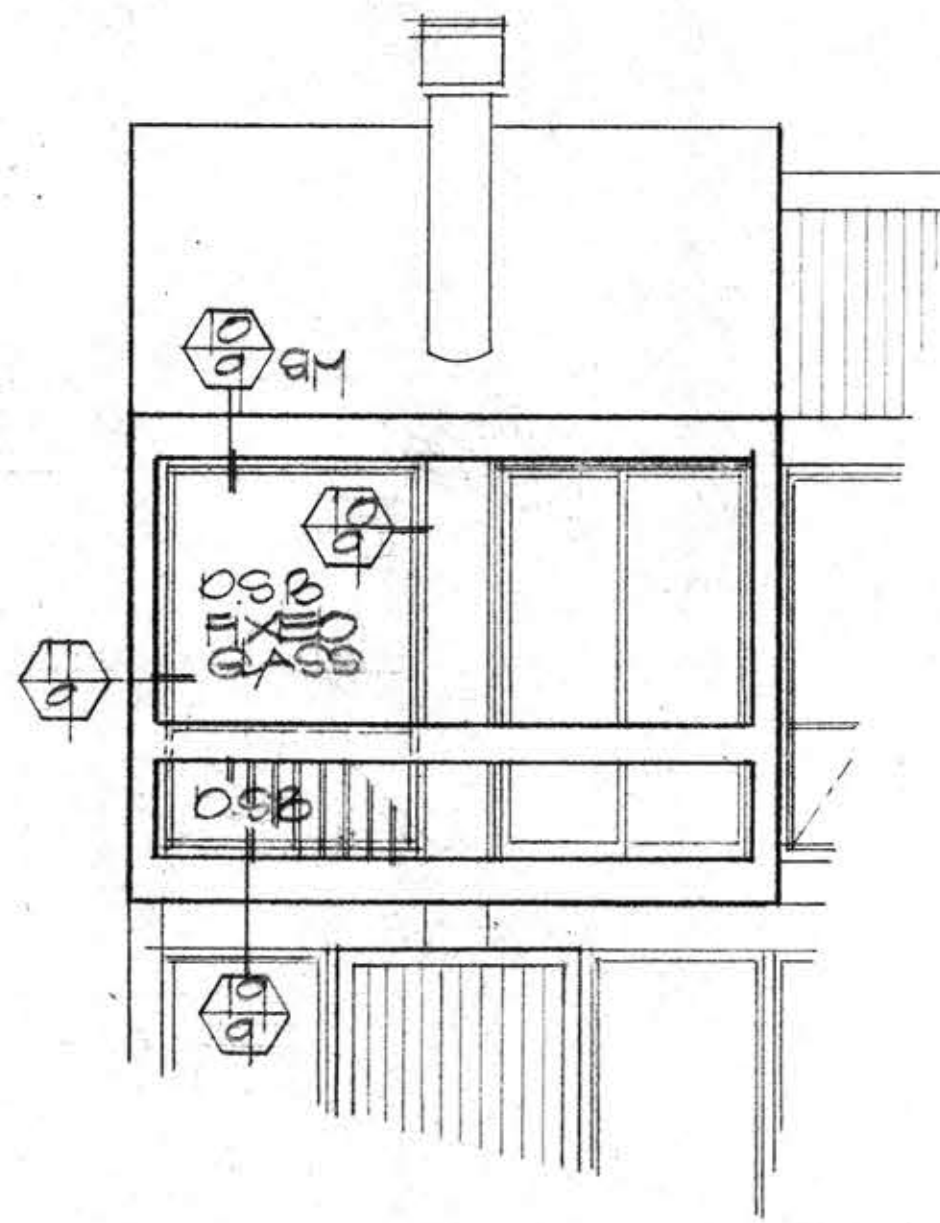
PLAN REVISIONS FOR 840 UNITS
(TO BE CONSTRUCTED)



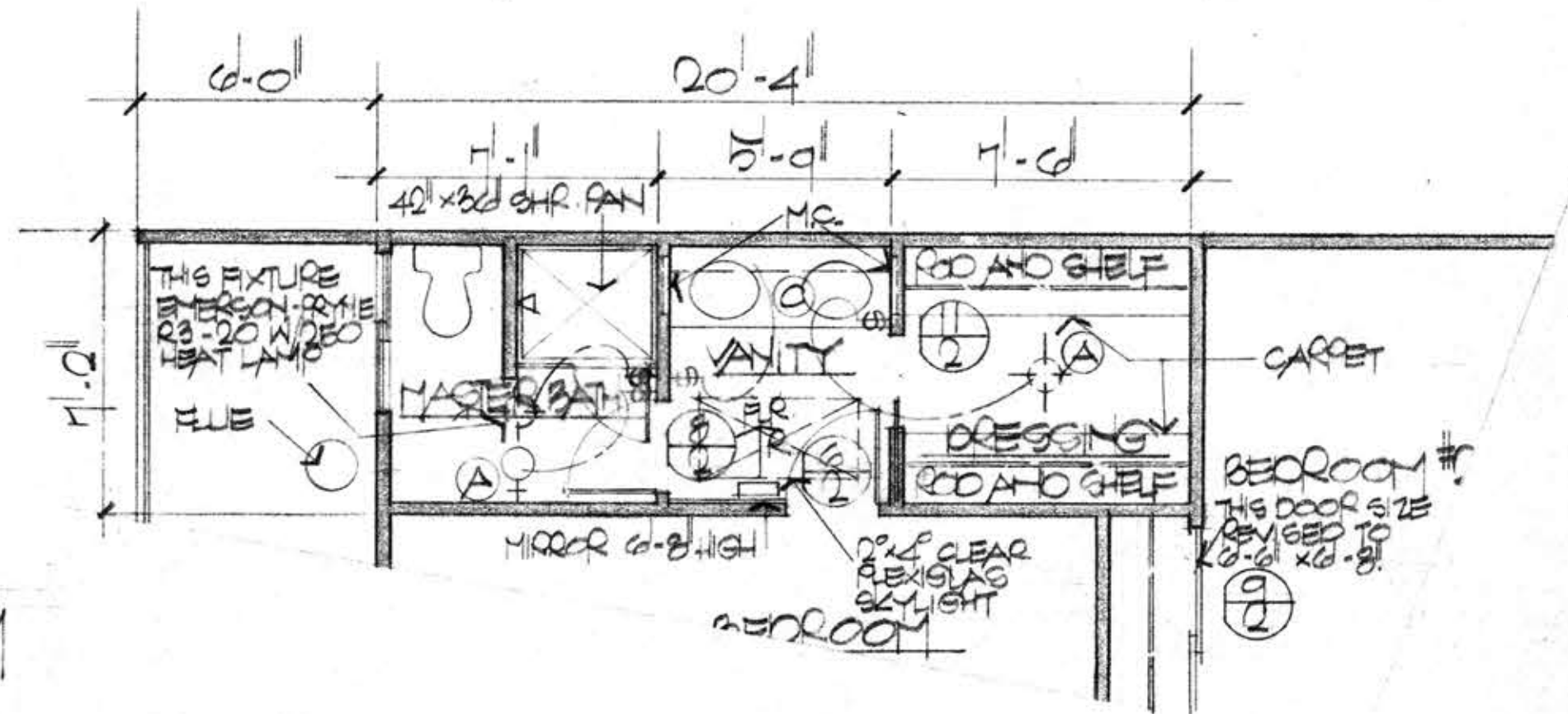
REVISED EAST ELEVATION AT
BDRM #2 AND FAMILY RM 840 UNIT



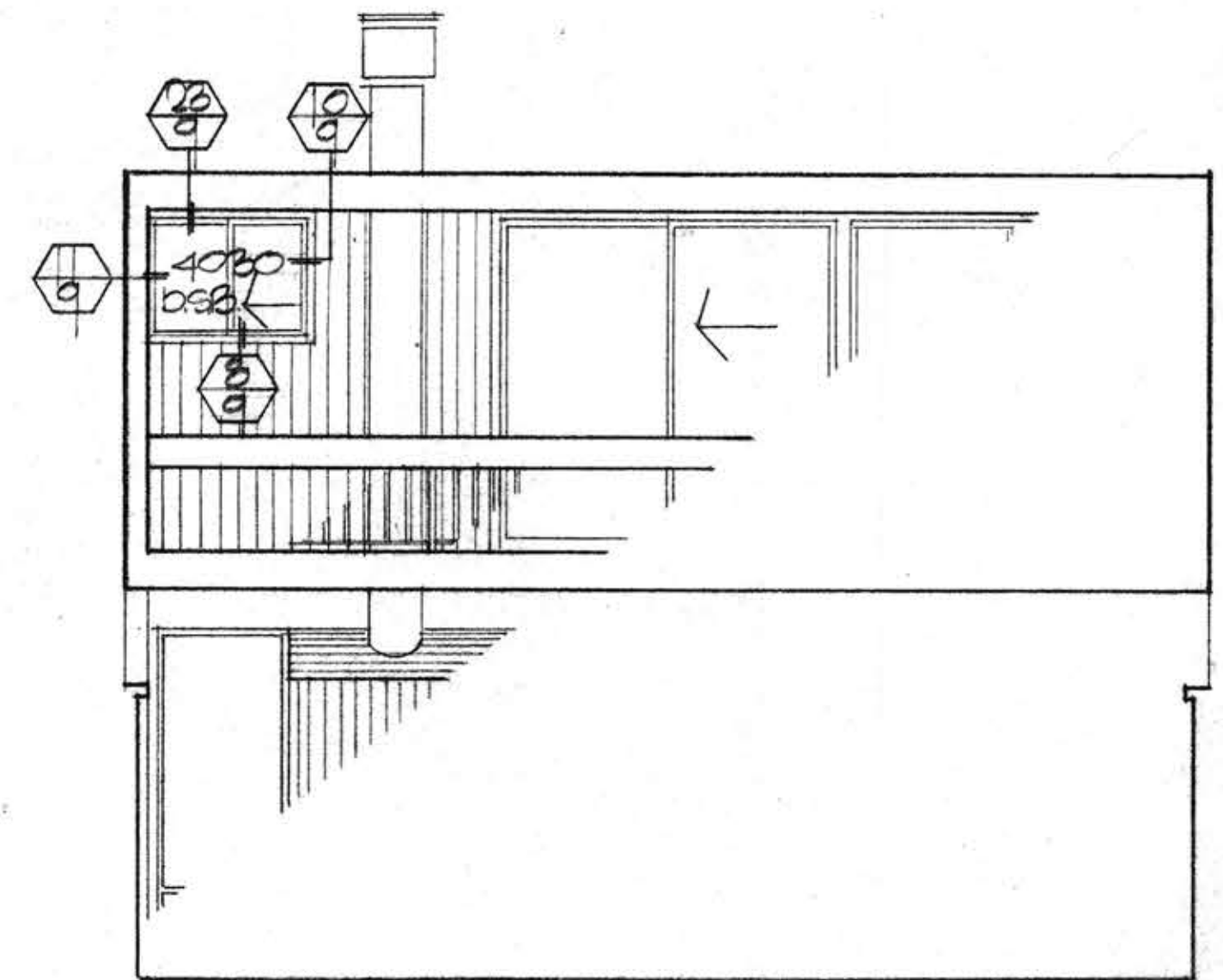
2x4 SPACED
DECKING
REVISED PLAN NORTH WALL
AT M. BEDROOM 941 UNIT



REVISED NORTH ELEVATION
AT M. BEDROOM 941 UNIT



REVISED PLAN @ MASTER BATH, VANITY & DRESSING
831 UNIT SCALE: 1/4" = 1'-0"



REVISED NORTH ELEVATION @ MASTER BATH
831 UNIT SCALE: 1/4" = 1'-0"

JOB NO
6802
DATE
11 AUG 1969

PALLENNA BAY TOWNHOUSES
ALAMEDA CALIFORNIA

FISHER • FRIEDMAN • ASSOCIATES • A. I. A.
ARCHITECTS AND PLANNING CONSULTANTS
ROBERT J. HERRING • A. I. A. • ASSOCIATE
148 CALIFORNIA STREET • SAN FRANCISCO • CALIFORNIA

SHEET

A-8