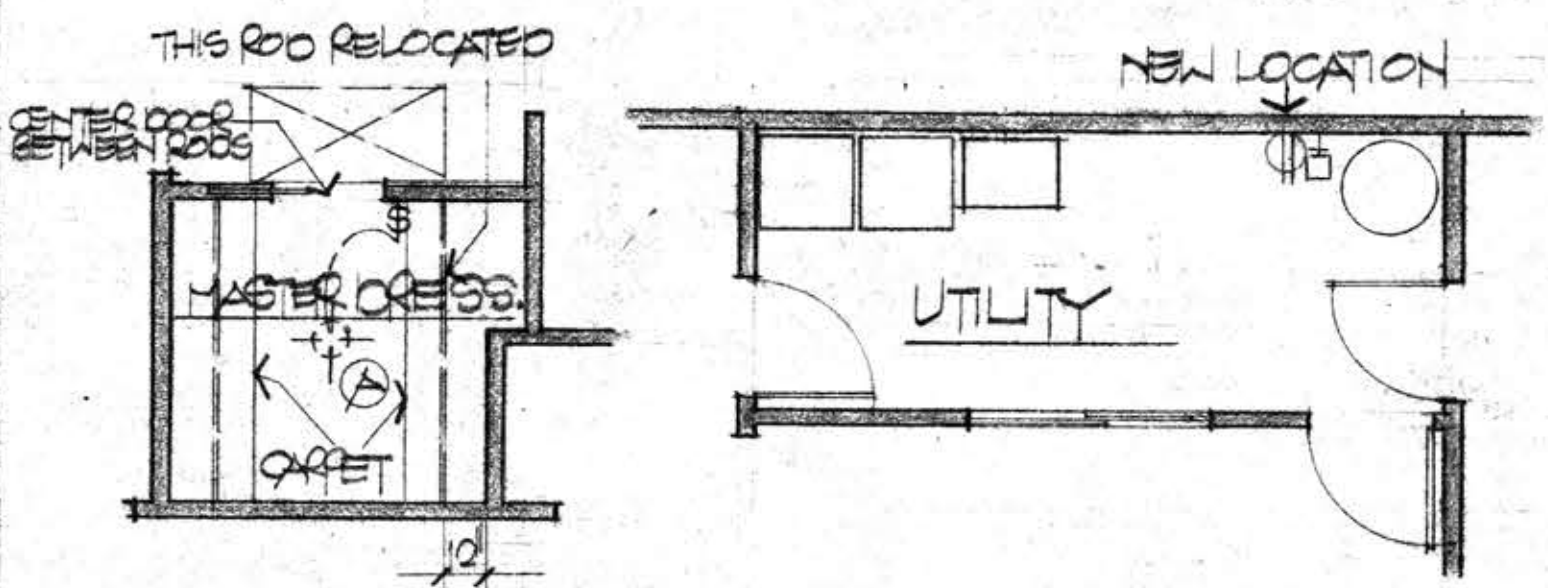
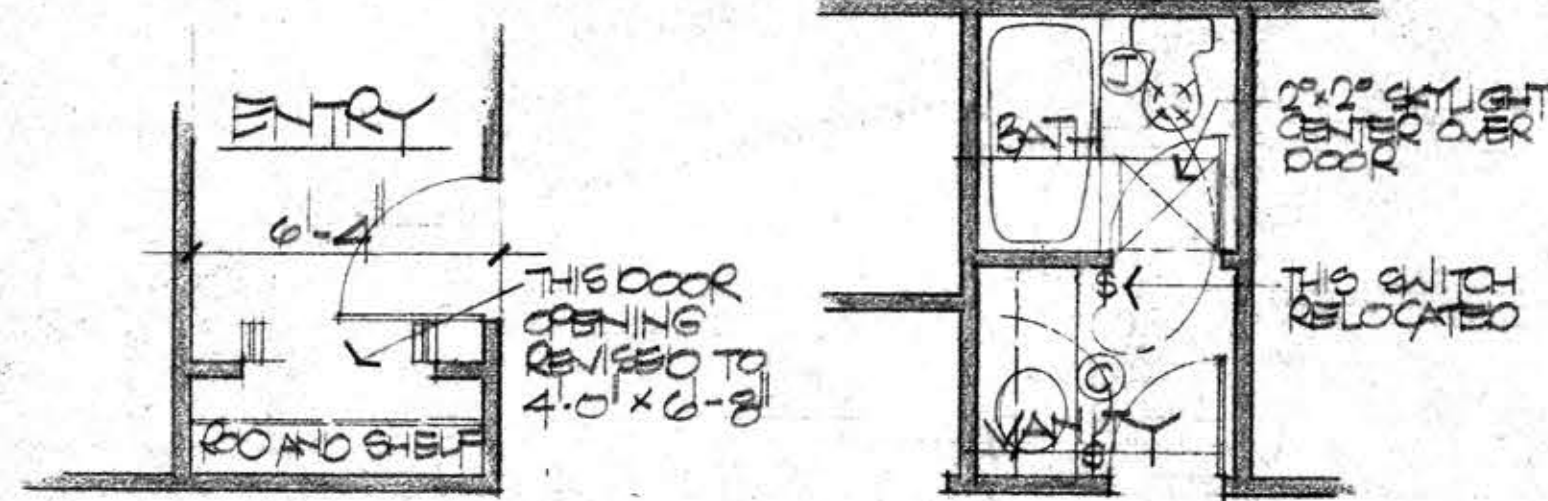


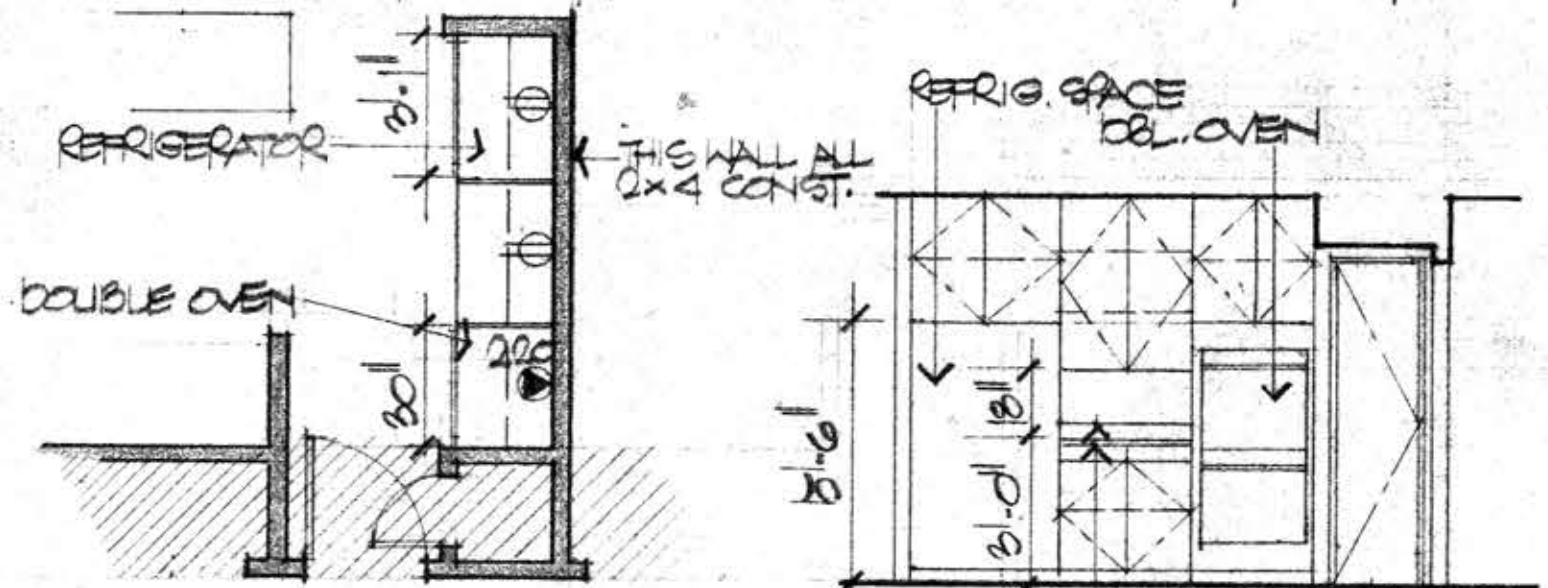
TYPICAL BAR - ALL UNITS
PLAN AND ELEVATION REVISIONS SCALE 1/4" = 1'-0"



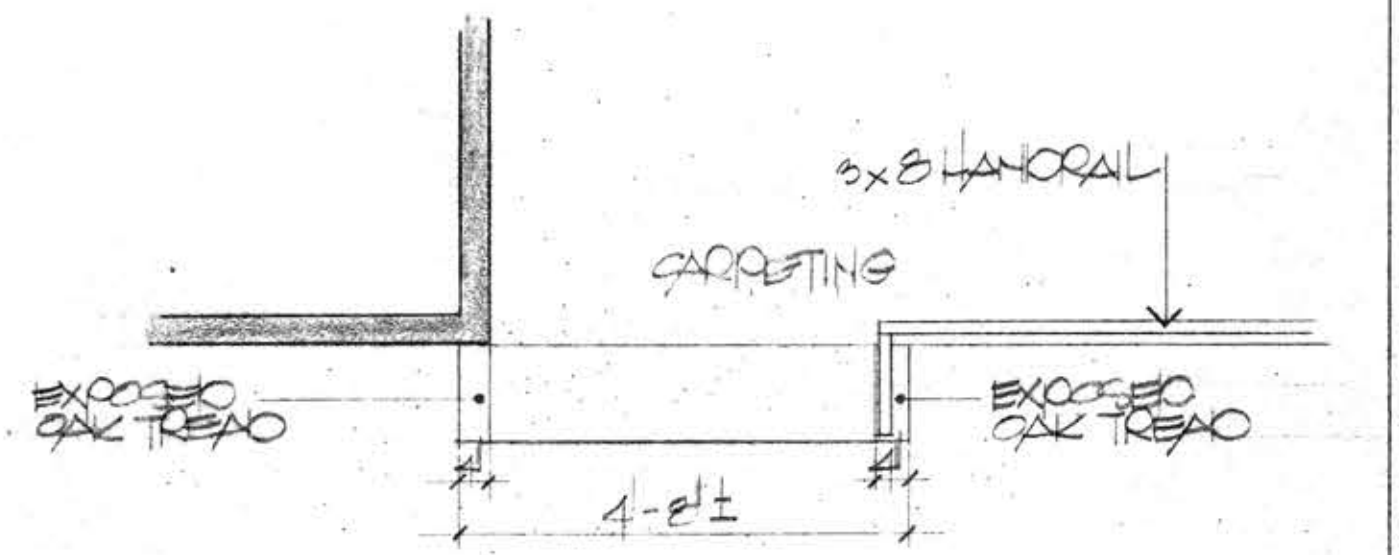
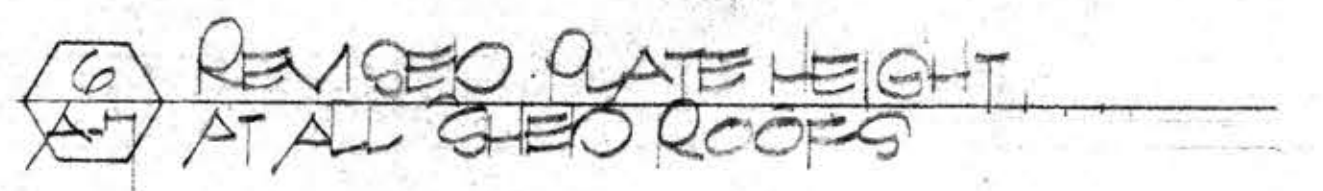
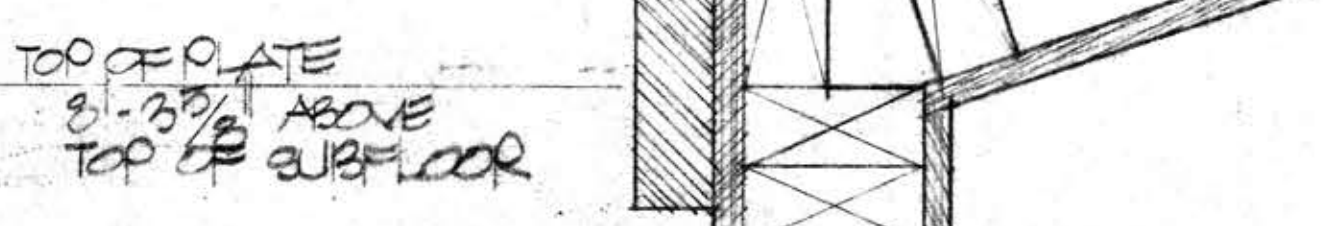
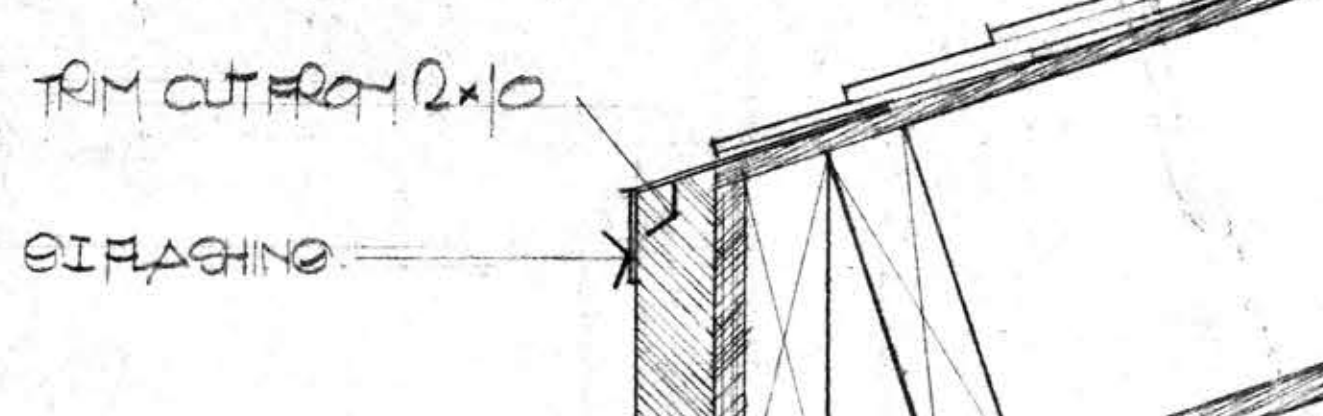
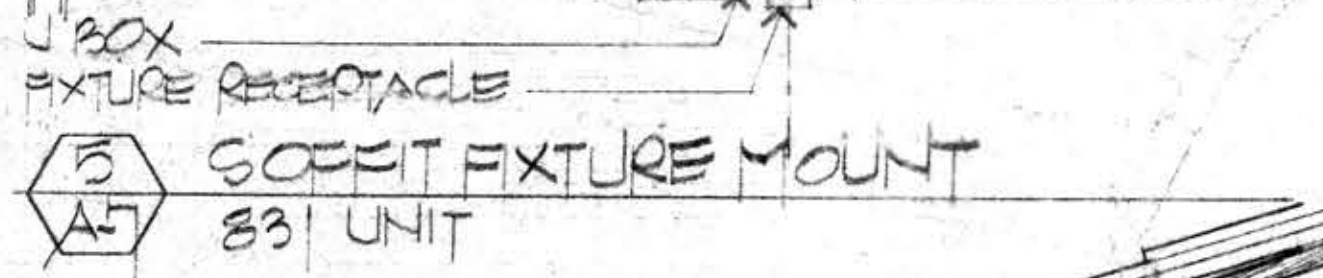
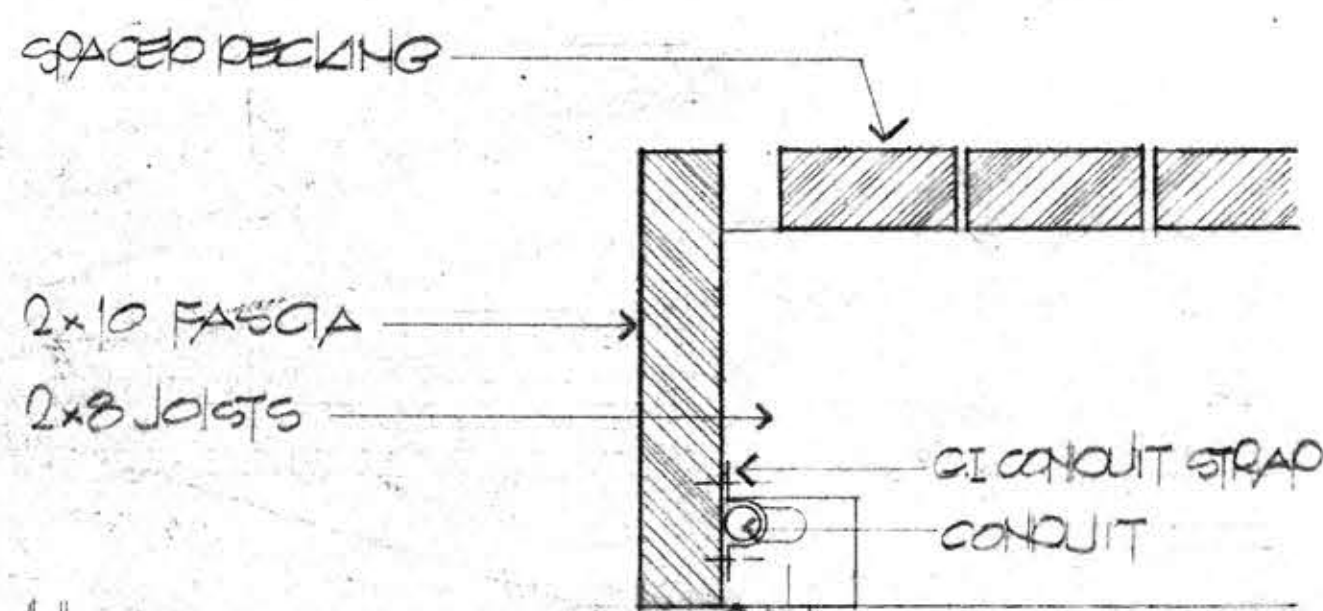
PLAN REVISIONS AT M. DRESSING 941 UNIT
OUTLET RELOCATION AT UTILITY - 931 AND 941 UNITS



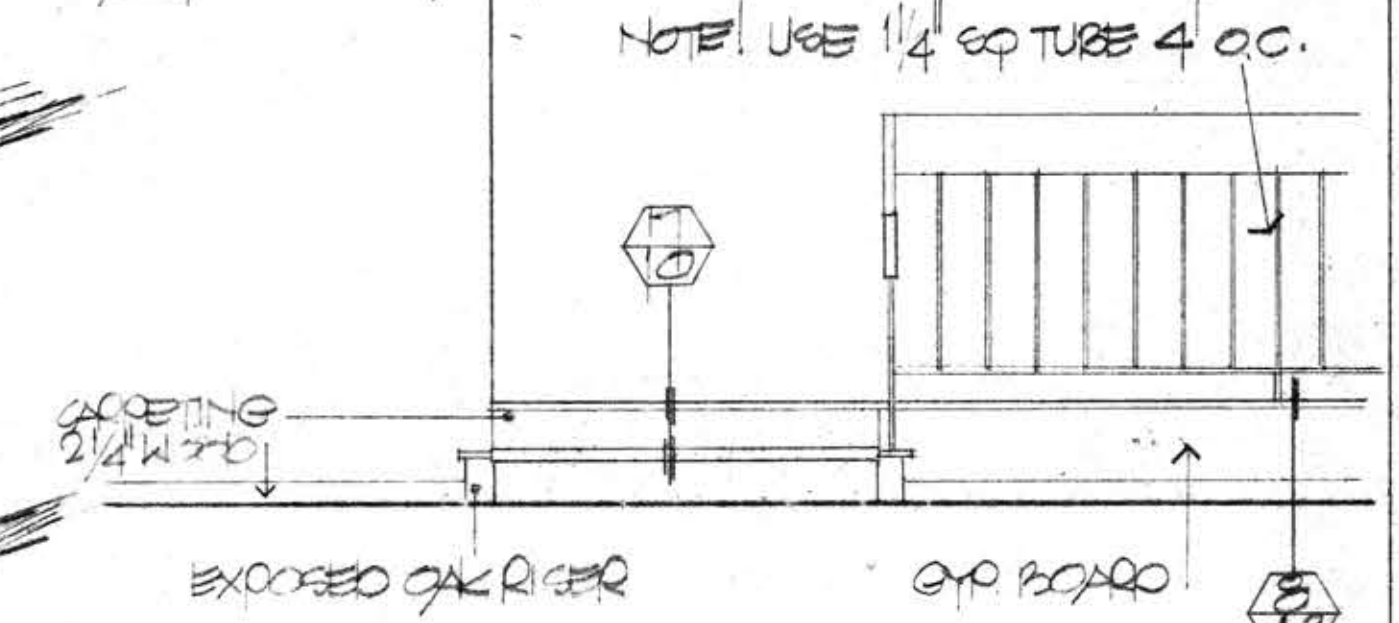
REVISION AT ENTRY CLOSET - 931 AND 941 UNITS
REVISION AT BATH VANITY - 931 UNIT



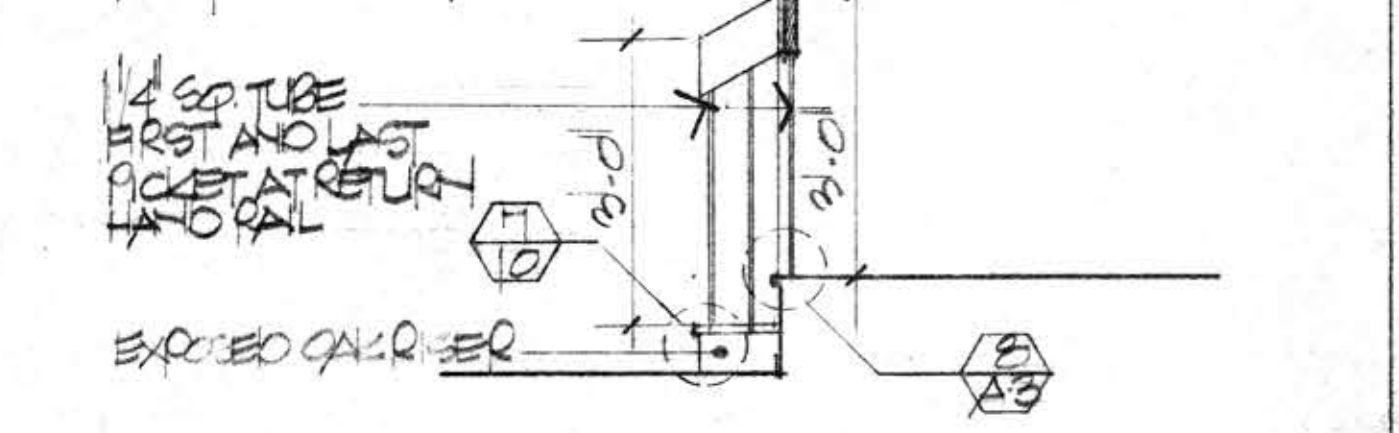
PLAN AND ELEVATION REVISIONS AT KITCHEN SOUTH WALL
840 AND 843 UNITS



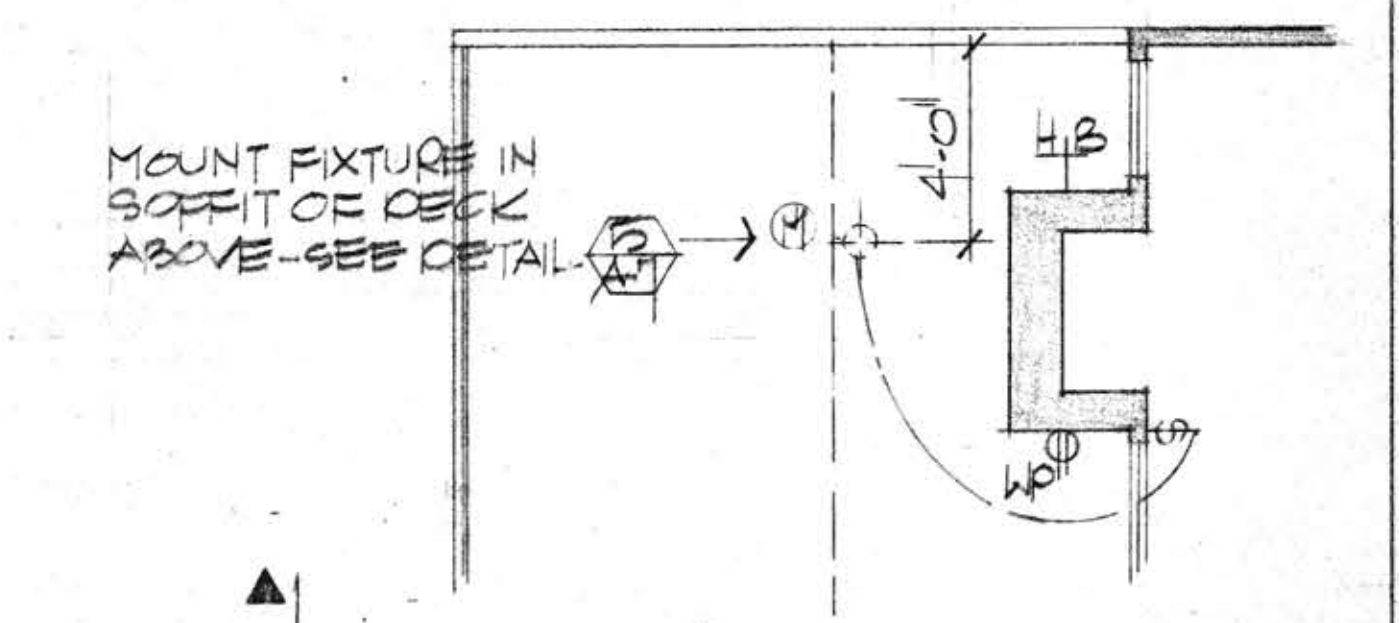
PLAN AT LIVING ROOM STAIR
SCALE 1/2" = 1'-0"



ELEVATION AT LIVING ROOM STAIR
SCALE 1/2" = 1'-0"



END ELEV. AT LIVING ROOM STAIR
SCALE 1/2" = 1'-0"



PARTIAL PLAN 831 UNIT SHOWING LOCATION OF M FIXTURE
SCALE 1/4" = 1'-0"

JOB NO.
6802
DATE
6-23-68

BALLENA BAY TOWNHOUSES
ALAMEDA CALIFORNIA

FISHER • FRIEDMAN • ASSOCIATES • A.I.A.
ARCHITECTS AND PLANNING CONSULTANTS
ROBERT J. GERBERG • A.I.A. • ASSOCIATE
16-24 A STREET DETAIL 4

SHEET NO.
A-7