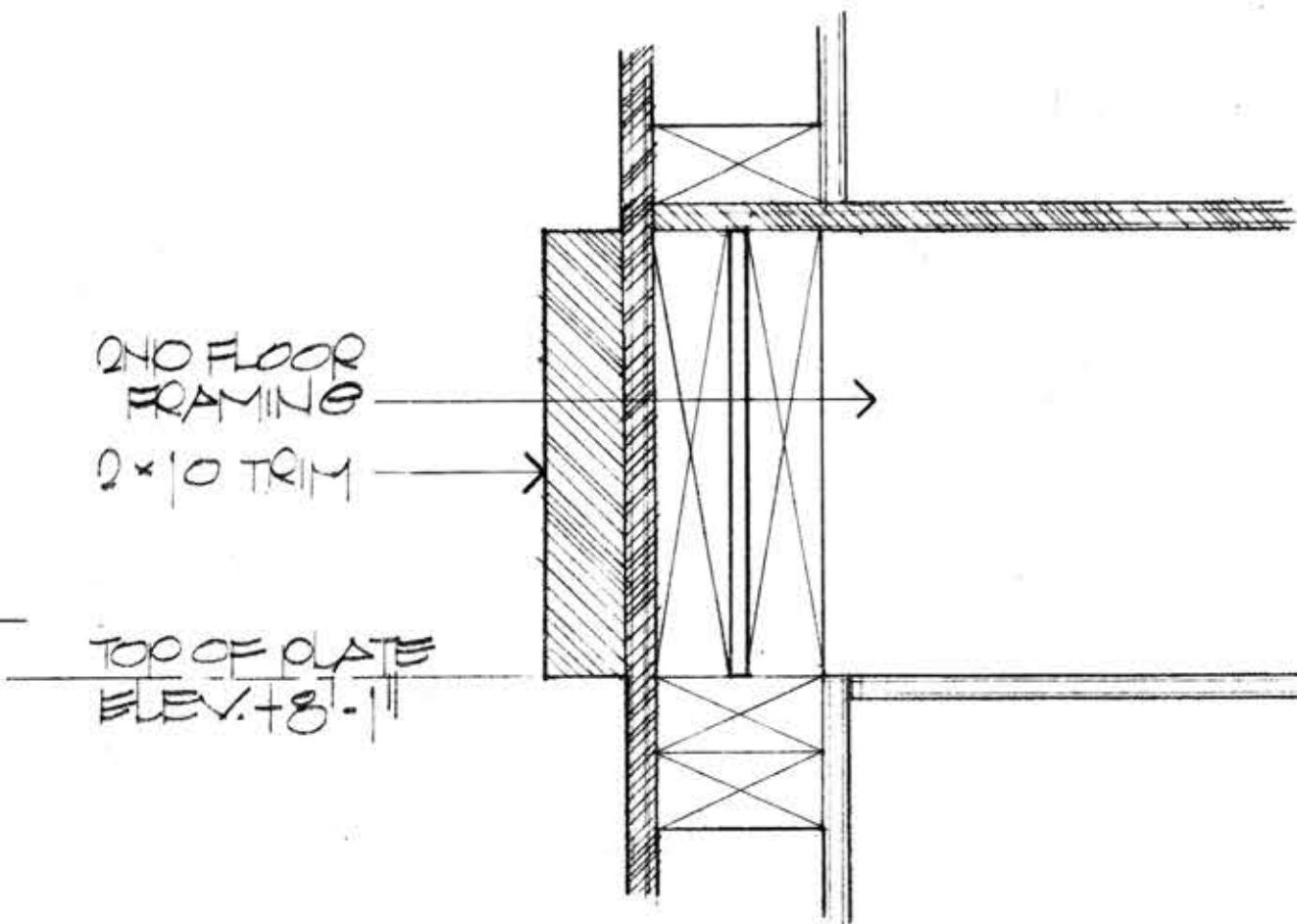


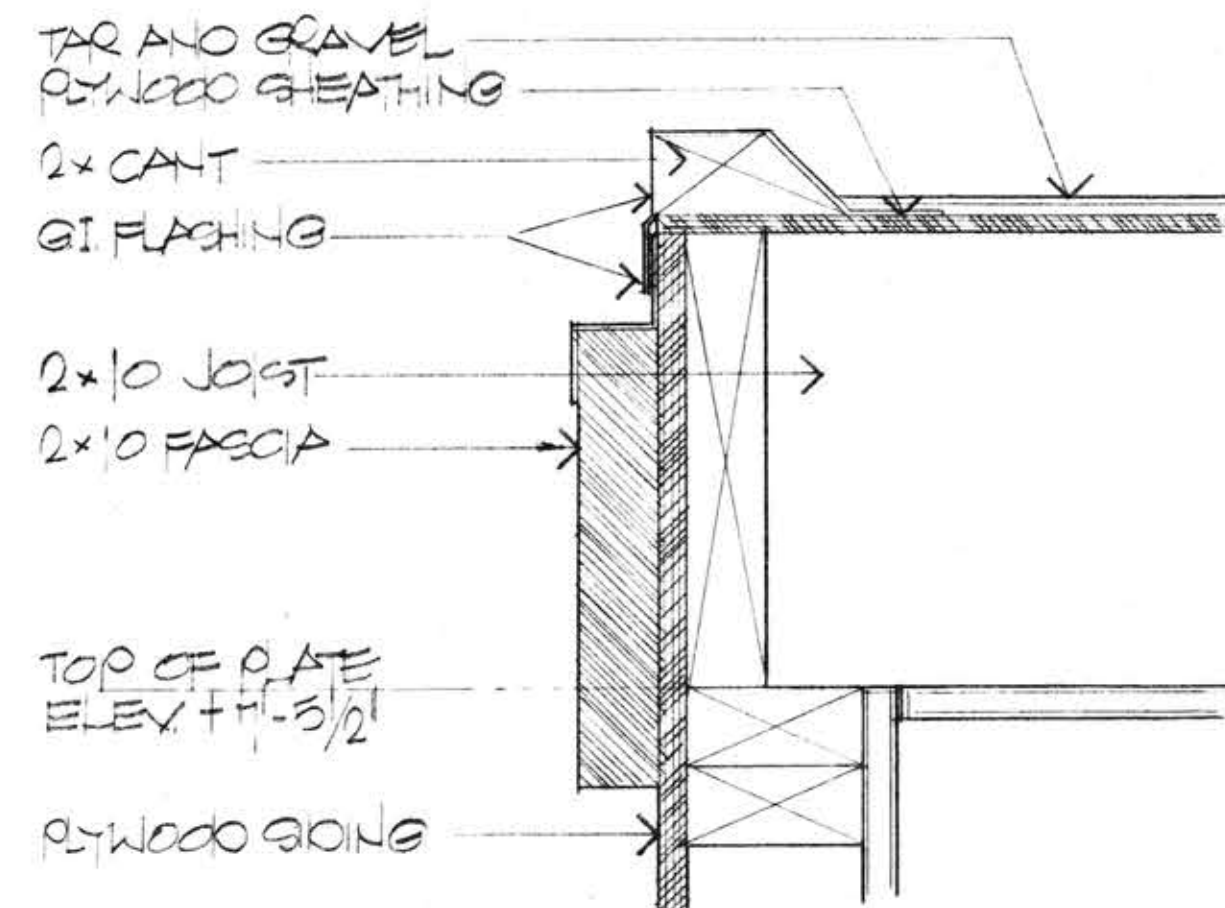
5
A-6 UNITS 03 & 04 REVISED CARPORT WITH ADDITIONAL 4x6 POSTS



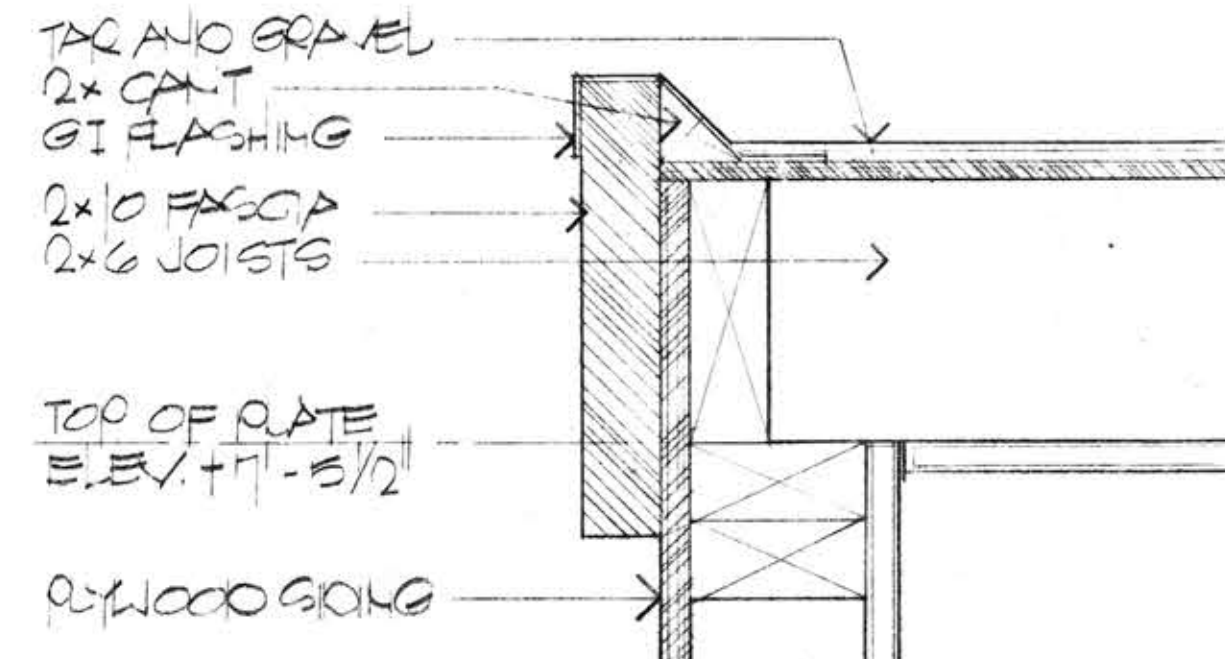
4
A-6 TYPICAL TRIM BETWEEN FLOORS

NOTE: FOR ALL UNITS TO BE BUILT NOTE FOLLOWING REVISIONS OF TOP OF PLATE HEIGHT AT GARAGE:

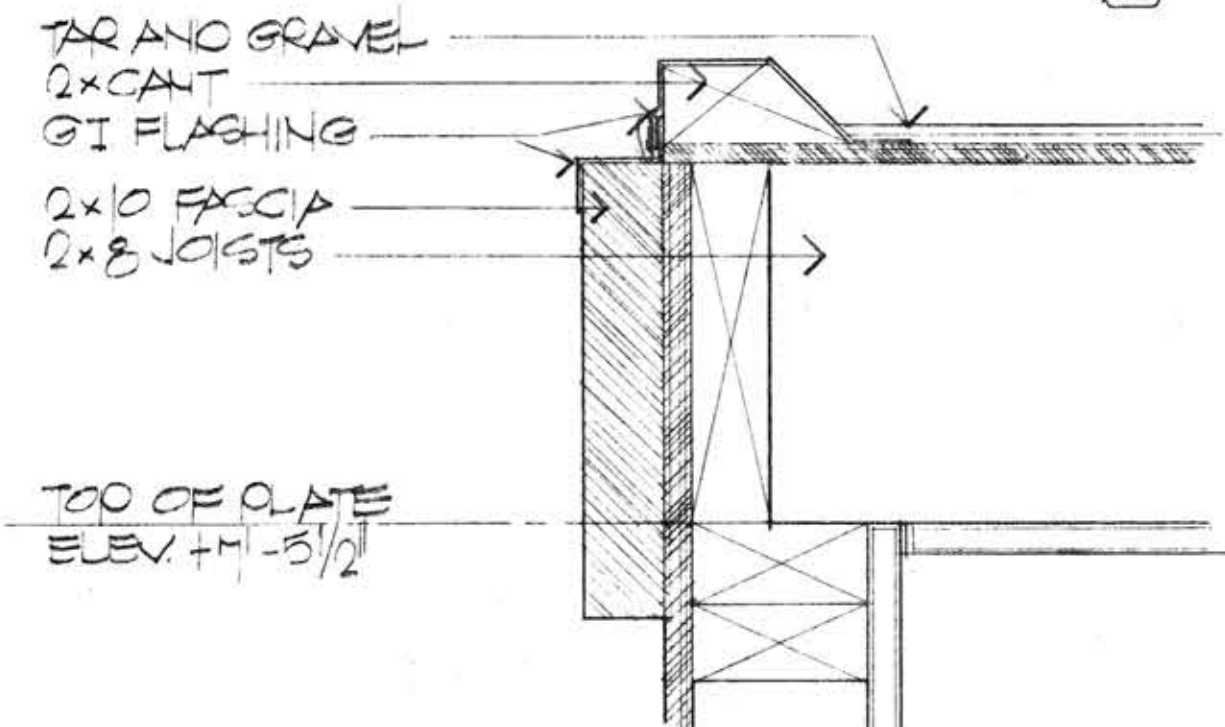
ROOF JOIST SIZE	TOP OF PLATE
2x10	7'-1/2"
2x8	7'-3/2"
2x6	7'-5/2"



1
A-6 UNITS 830 AND 831



2
A-6 UNITS 03, 04 AND 840, 843 PARTIAL FOR EXCEPTIONS FOR 840 & 843 SEE 3 A-6



3
A-6 UNITS 840 AND 843 LOTS 3-1, 3-8, 3-9, AND 3-16

JOB NO.
6802
DATE
6-13-1969

BALLENA BAY TOWNHOUSES
ALAMEDA CALIFORNIA

FISHER • FRIEDMAN • ASSOCIATES • A.I.A.
ARCHITECTS AND PLANNING CONSULTANTS
43221 J. GEEB RD. A. I. A. • ASSOCIAT
THE CALIFORNIA STREET • SAN FRANCISCO • CALIFORNIA

REVISED TRIM AT
GARAGE ROOF APPLICABLE
TO LOTS 3-1, 3-4 & 3-16 TO 3-16

SHEET NO.
A-6