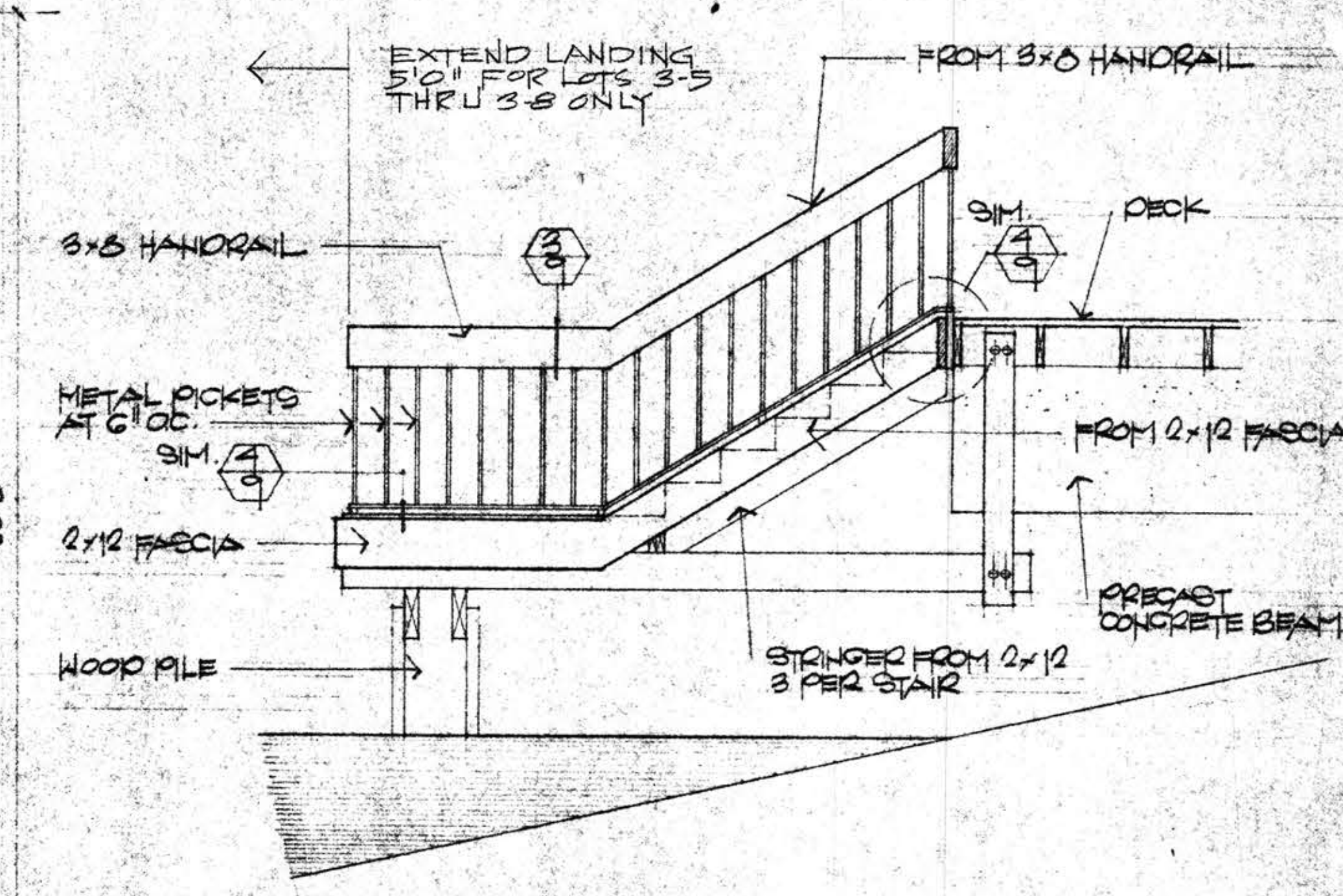
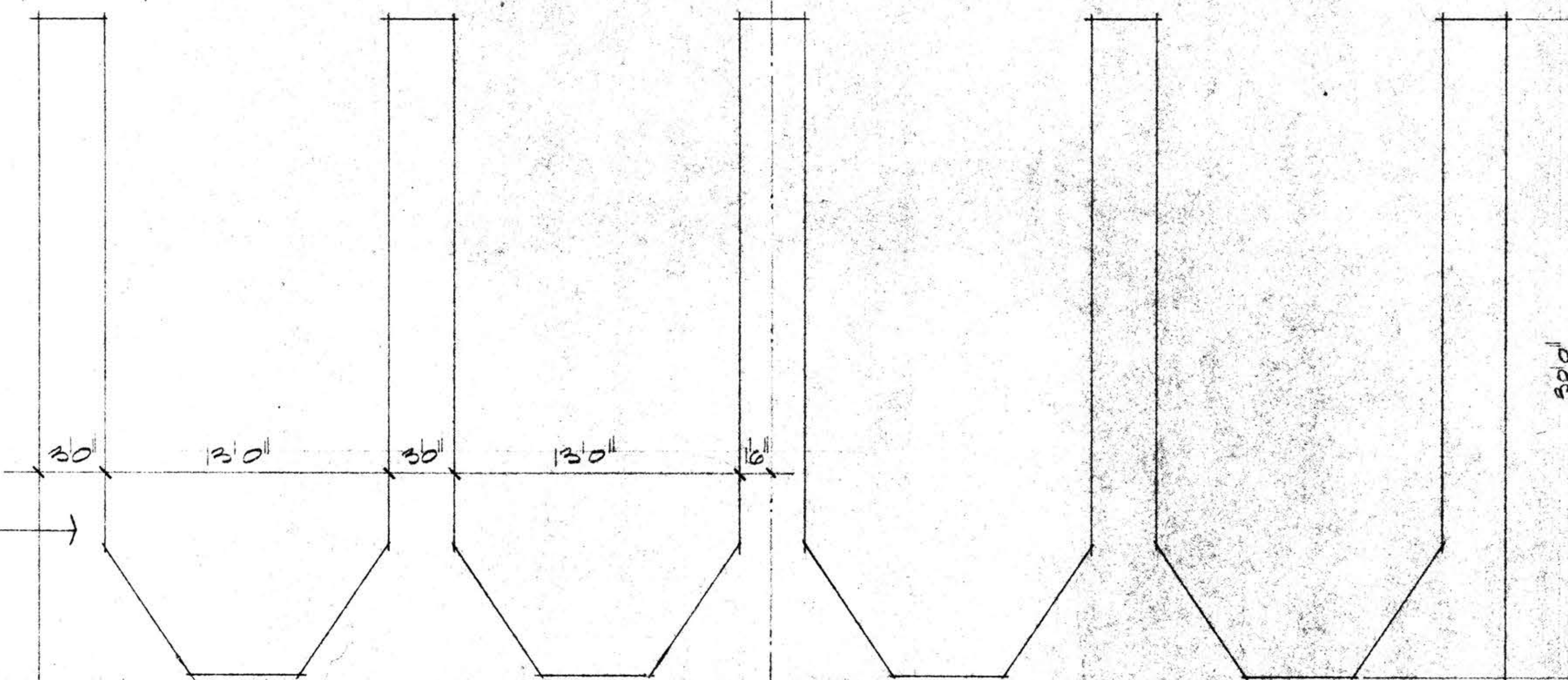
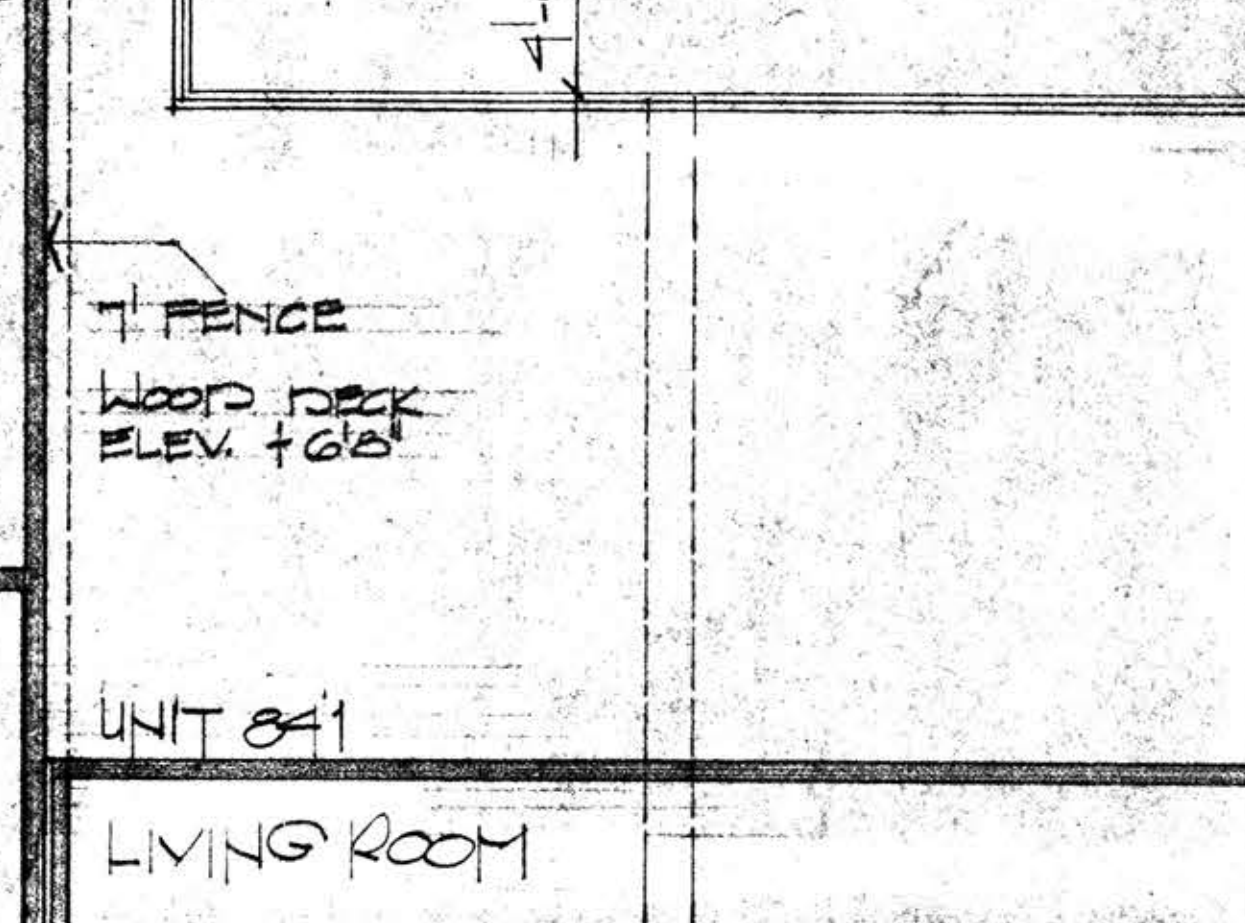
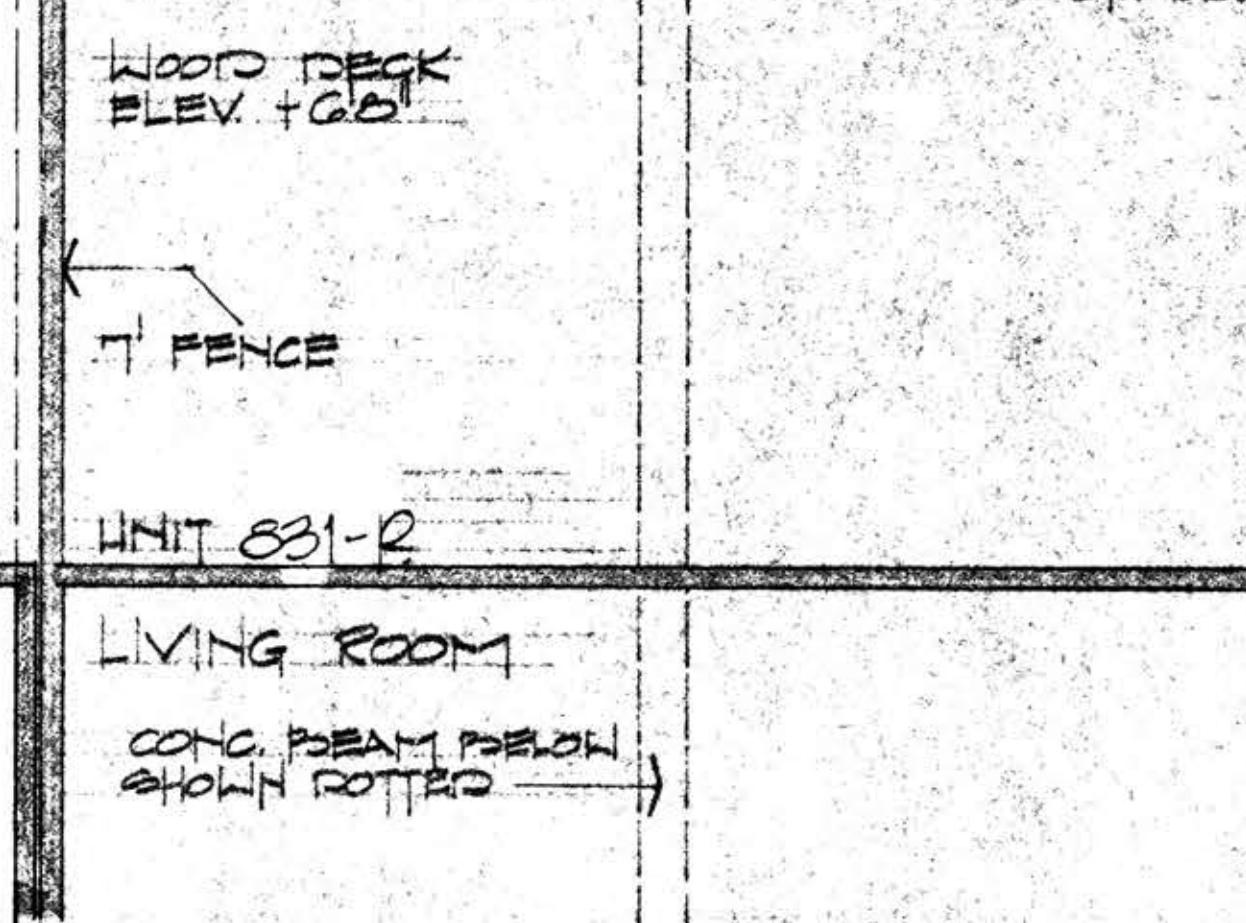
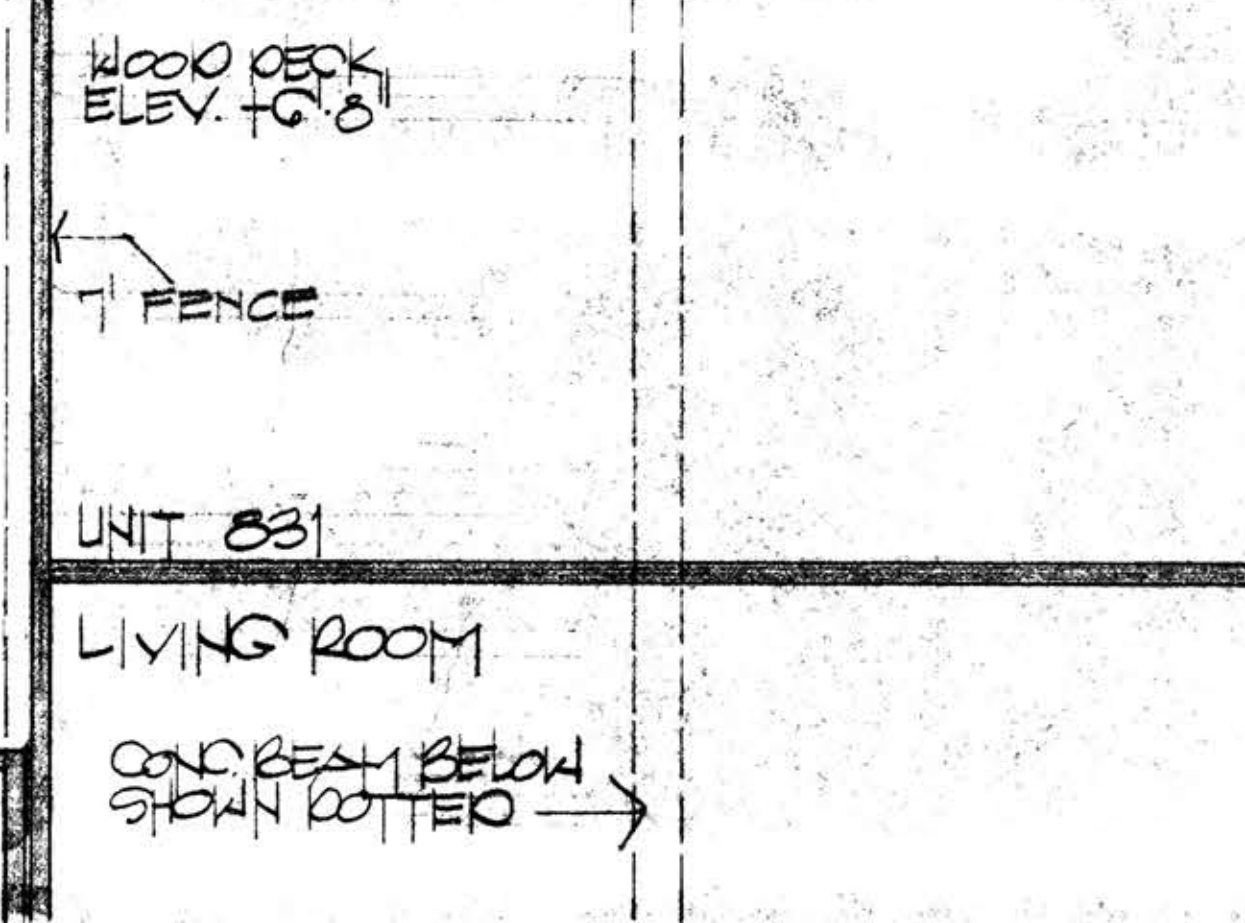
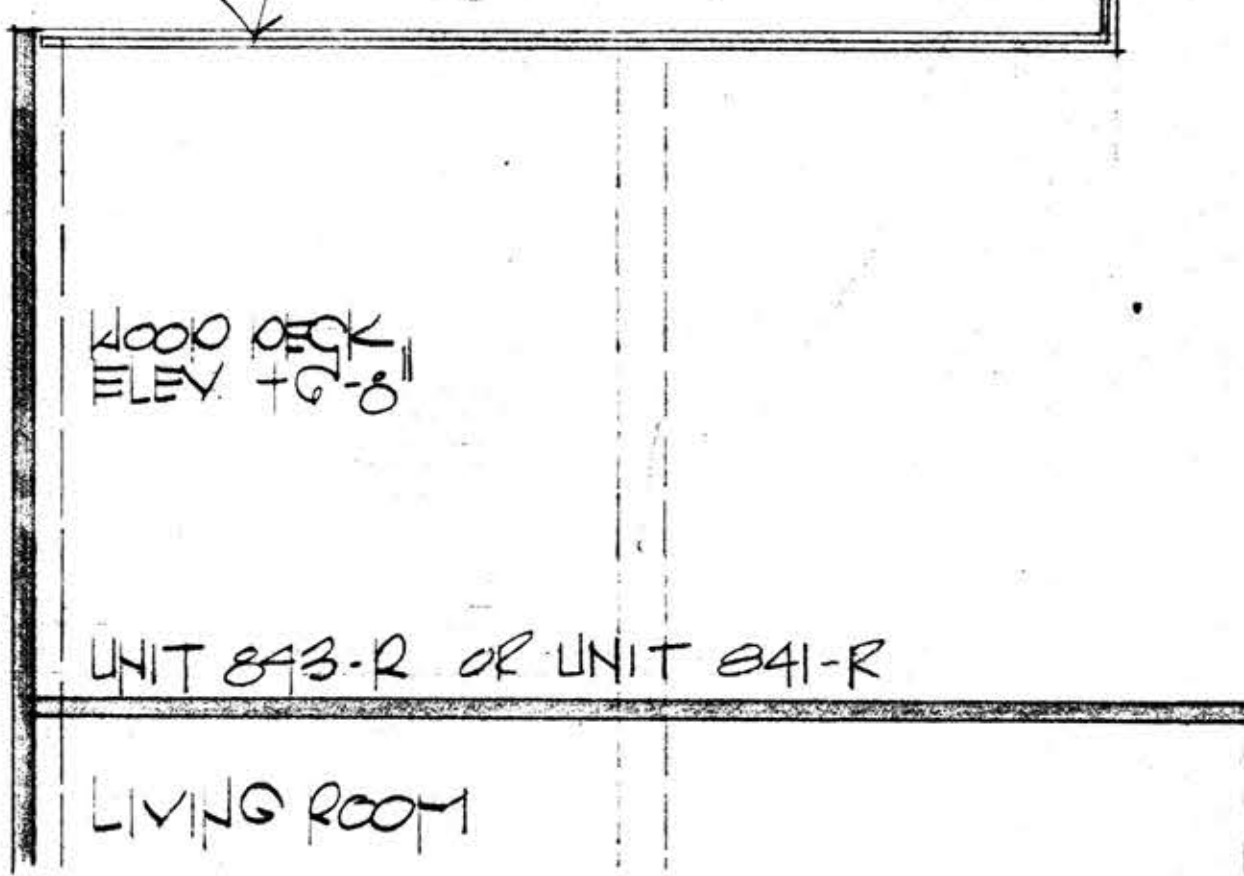
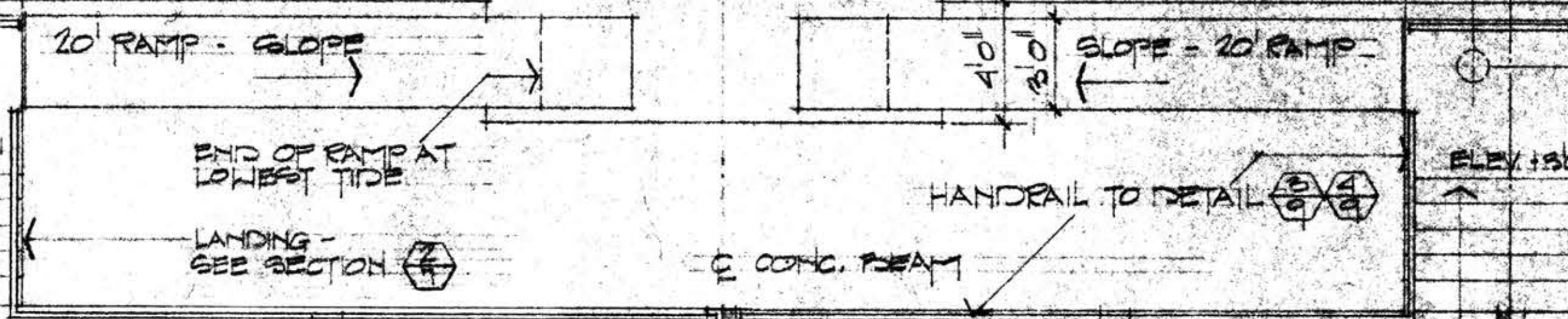


HEADFLOAT & FINGERS - NIC



ELEVATION OF LANDING
SCALE 1/2" = 1'-0"

WOOD PILE NIC
NO LONG ELEVATION SEE
WOOD PILE
HANDRAIL TO DETAIL



LANDING KEY
 LOT 1-1 THRU 1-4 SIMILAR TO THIS SHEET
 LOT 1-5 THRU 1-8 SIMILAR TO THIS SHEET
 LOT 3-1 THRU 3-4 SIMILAR TO THIS SHEET
 LOT 3-5 THRU 3-8 SIMILAR TO THIS SHEET
 NOTE LANDING DIMENSION CHANGE
 ON LOT 3-5 THRU 3-8 ONLY

2-24	LANDING KEY
1-31	DM REVIEWED
1-17	
DATE	NO. REVISION

JOB NO.
0202
DATE
11-11-00

BALLENA BAY TOWNHOUSES
ALAMEDA CALIFORNIA

FISHER & FRIEDMAN ASSOCIATES P.A. ARCHITECTS AND PLANNING CONSULTANTS
ROBERT J. DEBRING A.S.A. & ASSOCIATES
245 CALIFORNIA STREET, SUITE 200, OAKLAND, CA 94612

LANDINGS
1/4" = 1'-0"