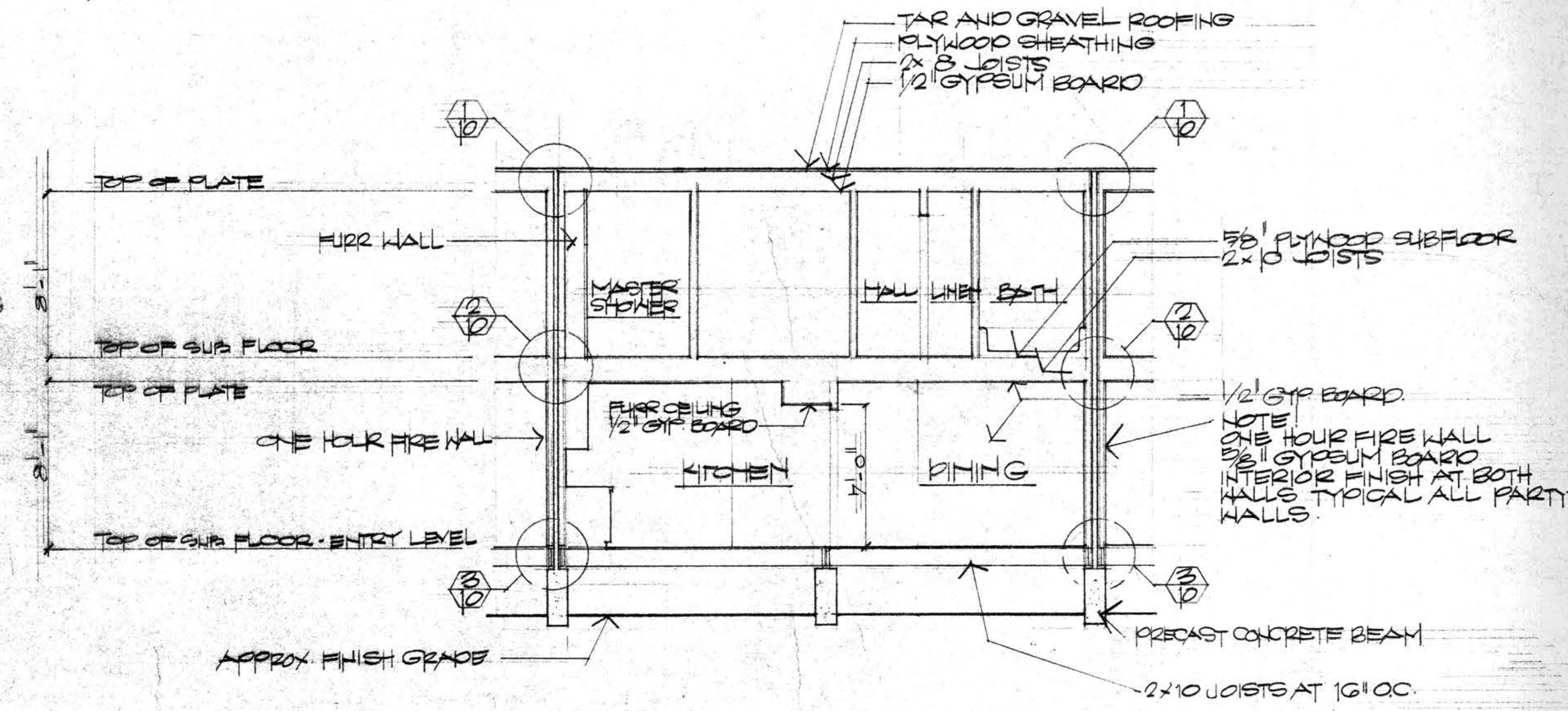
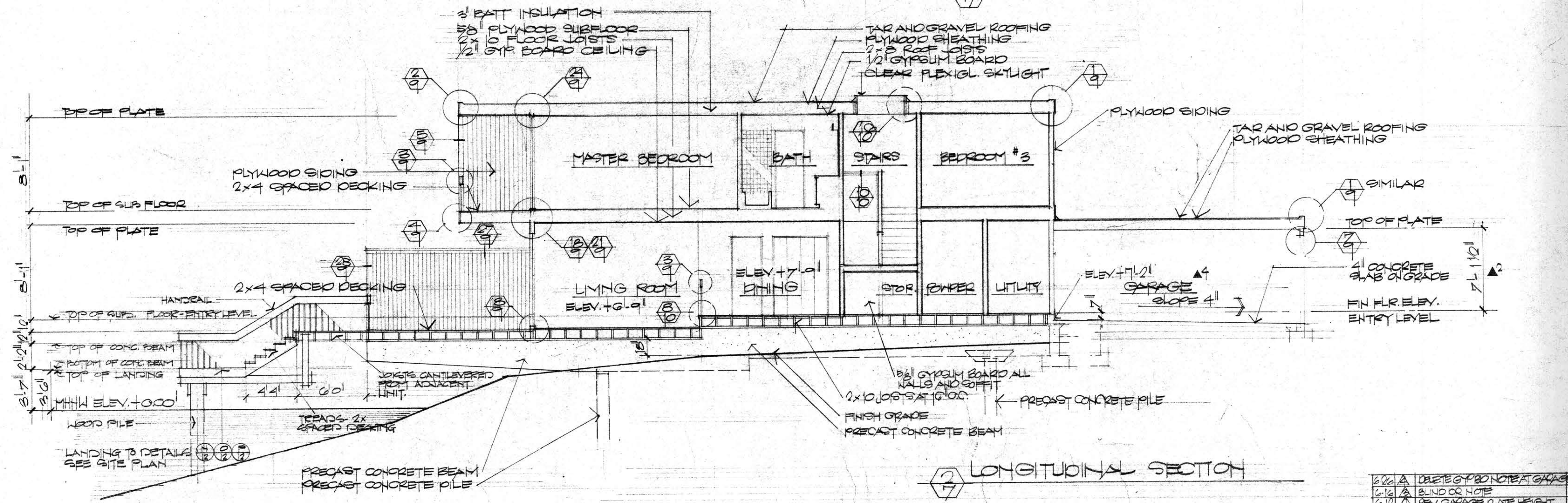


COURT ELEVATION LOOKING AT ENTRY PORCH



CROSS SECTION



LONGITUDINAL SECTION

6-22	A	DELETE GYP BOARD AT GARAGE
6-12	A	BLIND DOOR NOTE
6-12	A	REV GARAGE PLATE HEIGHT
1-17	A	
DATE	NO	REVISION

JOB NO.  
6802  
DATE  
11-11-63

BALLENA BAY TOWNHOUSES  
ALAMEDA CALIFORNIA

FISHER • FRIEDMAN • ASSOCIATES • A.I.A.  
ARCHITECTS AND PLANNING CONSULTANTS  
ROBERT J. DERRING A.I.A. • ASSOCIATE  
222 CALIFORNIA STREET • SAN FRANCISCO 9 • CALIFORNIA

SECTIONS  
ELEVATIONS 1/4" = 1'-0"

831

SHEET  
7